

Δήμος Ρεθύμνου

Φωτισμός γηπέδου

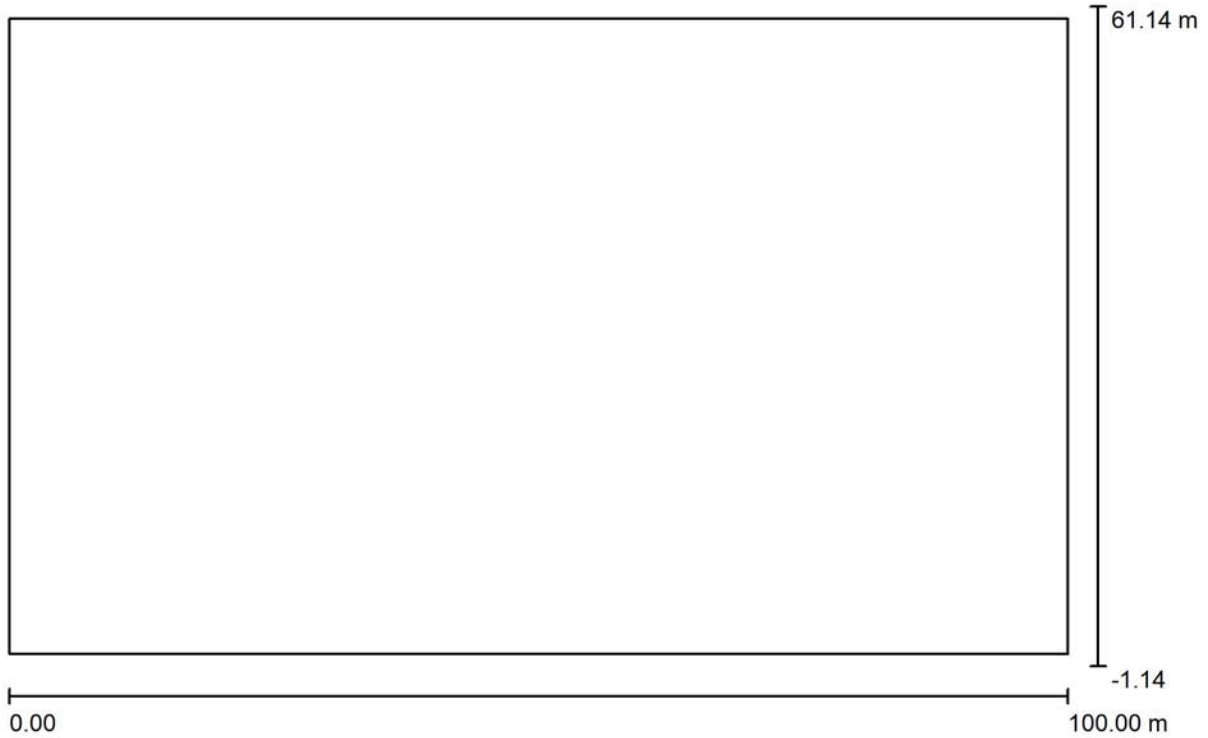
Date: 18.09.2019
Operator:

Table of contents

Δήμος Ρεθύμνου	
Project Cover	1
Table of contents	2
Γήπεδο ποδοσφαίρου	
Planning data	3
Luminaire parts list	4
Floor plan	5
Luminaires (layout plan)	6
Luminaires (coordinates list)	7
Sport Sites (Coordinates List)	9
Exterior Surfaces	
Γήπεδο ποδοσφαίρου	
Summary	10
Isolines (E, Horizontal)	11

Operator
Telephone
Fax
e-Mail

Γήπεδο ποδοσφαίρου / Planning data



Maintenance factor: 0.90, ULR (Upward Light Ratio): 5.0%

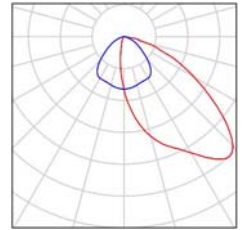
Scale 1:715

Luminaire Parts List

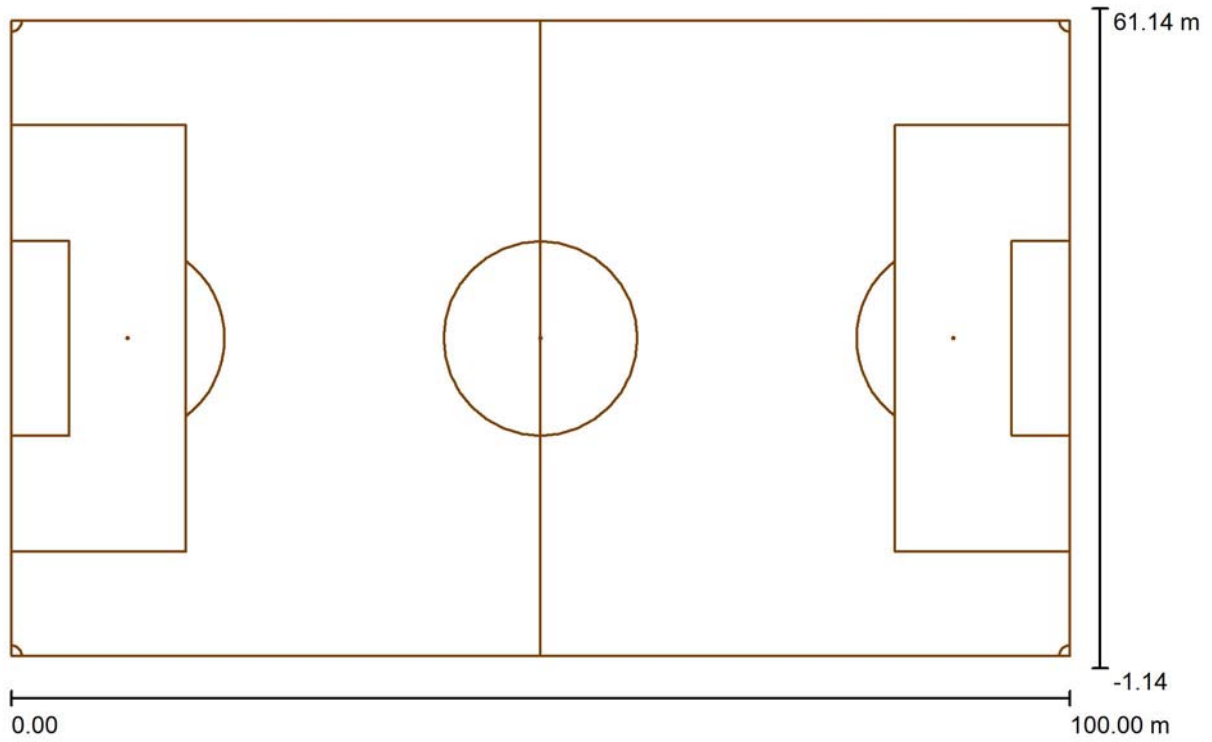
No.	Pieces	Designation (Correction Factor)	Φ (Luminaire) [lm]	Φ (Lamps) [lm]	P [W]
1	48	Disano 1898 Rodio - COB asymmetric Disano 1898 196W CLD CELL graphite (1.000)	21050	21050	194.7
			Total: 1010378	Total: 1010400	9345.6

Γήπεδο ποδοσφαίρου / Luminaire parts list

48 Pieces Disano 1898 Rodio - COB asymmetric Disano
1898 196W CLD CELL graphite
Article No.: 1898 Rodio - COB asymmetric
Luminous flux (Luminaire): 21050 lm
Luminous flux (Lamps): 21050 lm
Luminaire Wattage: 194.7 W
Luminaire classification according to CIE: 100
CIE flux code: 43 82 98 100 101
Fitting: 1 x led__rcas1196 (Correction Factor
1.000).

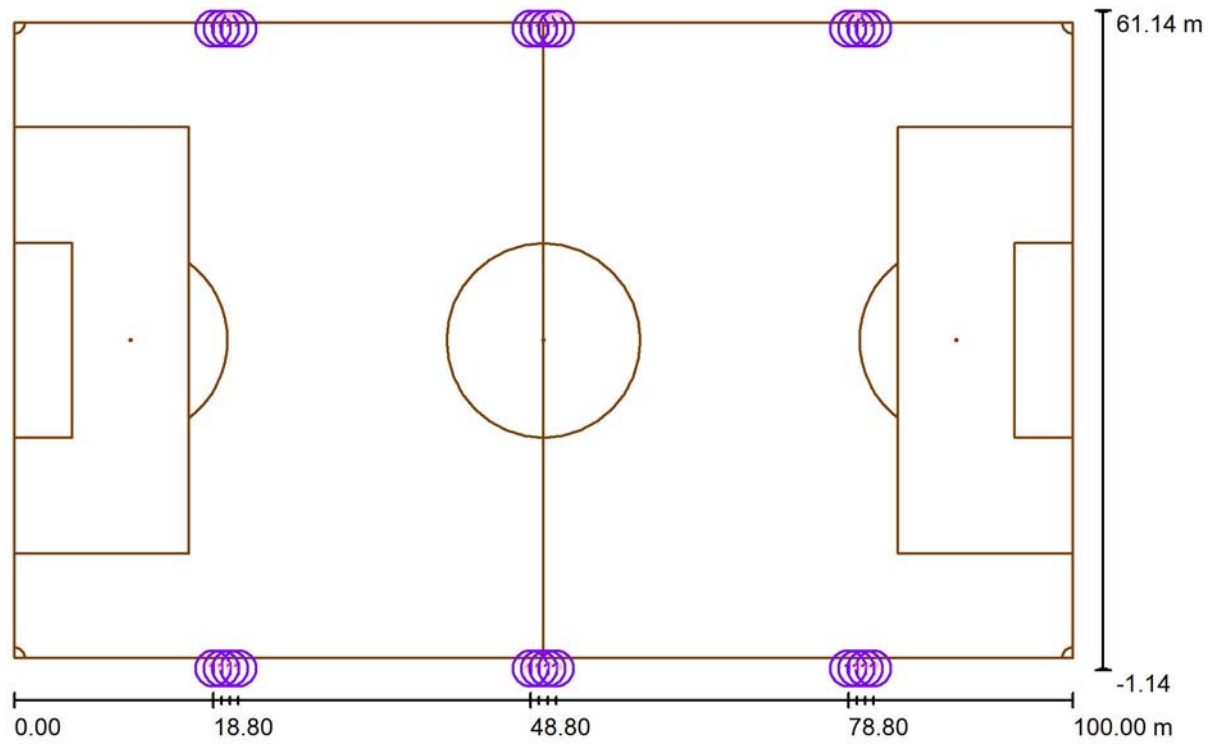


Γήπεδο ποδοσφαίρου / Floor plan



Scale 1 : 715

Γήπεδο ποδοσφαίρου / Luminaires (layout plan)



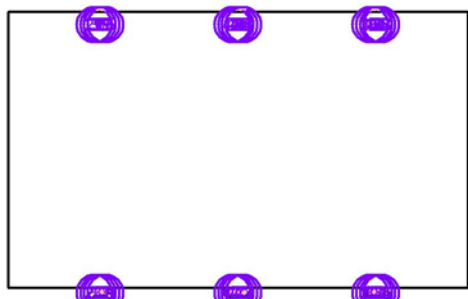
Scale 1 : 715

Luminaire Parts List

No.	Pieces	Designation
1	48	Disano 1898 Rodio - COB asymmetric Disano 1898 196W CLD CELL graphite

Γήπεδο ποδοσφαίρου / Luminaires (coordinates list)

Disano 1898 Rodio - COB asymmetric Disano 1898 196W CLD CELL graphite
21050 lm, 194.7 W, 1 x 1 x led__rcas1196 (Correction Factor 1.000).



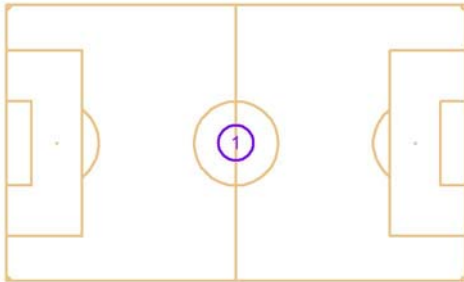
No.	Position [m]			Rotation [°]		
	X	Y	Z	X	Y	Z
1	18.800	-1.000	12.089	25.0	0.0	35.0
2	81.200	-1.000	12.089	25.0	0.0	-35.0
3	18.800	61.000	12.089	25.0	0.0	145.0
4	81.200	61.000	12.089	25.0	0.0	-145.0
5	19.600	-1.000	12.089	25.0	0.0	25.0
6	80.400	-1.000	12.089	25.0	0.0	-25.0
7	19.600	61.000	12.089	25.0	0.0	155.0
8	80.400	61.000	12.089	25.0	0.0	-155.0
9	20.400	-1.000	12.089	30.0	0.0	20.0
10	79.600	-1.000	12.089	30.0	0.0	-20.0
11	20.400	61.000	12.089	30.0	0.0	160.0
12	79.600	61.000	12.089	30.0	0.0	-160.0
13	21.200	-1.000	12.089	20.0	0.0	10.0
14	78.800	-1.000	12.089	20.0	0.0	-10.0
15	21.200	61.000	12.089	20.0	0.0	170.0
16	78.800	61.000	12.089	20.0	0.0	-170.0
17	48.800	-1.000	12.089	20.0	0.0	60.0
18	48.800	61.000	12.089	20.0	0.0	120.0
19	49.600	-1.000	12.089	25.0	0.0	20.0
20	49.600	61.000	12.089	25.0	0.0	160.0
21	50.400	-1.000	12.089	25.0	0.0	-20.0
22	50.400	61.000	12.089	25.0	0.0	-160.0
23	51.200	-1.000	12.089	20.0	0.0	-60.0
24	51.200	61.000	12.089	20.0	0.0	-120.0
25	18.800	-1.000	12.789	25.0	0.0	35.0
26	81.200	-1.000	12.789	25.0	0.0	-35.0
27	18.800	61.000	12.789	25.0	0.0	145.0
28	81.200	61.000	12.789	25.0	0.0	-145.0

Γήπεδο ποδοσφαίρου / Luminaires (coordinates list)

No.	Position [m]			Rotation [°]		
	X	Y	Z	X	Y	Z
29	21.200	-1.000	12.789	20.0	0.0	10.0
30	78.800	-1.000	12.789	20.0	0.0	-10.0
31	21.200	61.000	12.789	20.0	0.0	170.0
32	78.800	61.000	12.789	20.0	0.0	-170.0
33	19.600	-1.000	12.789	25.0	0.0	25.0
34	80.400	-1.000	12.789	25.0	0.0	-25.0
35	19.600	61.000	12.789	25.0	0.0	155.0
36	80.400	61.000	12.789	25.0	0.0	-155.0
37	20.400	-1.000	12.789	30.0	0.0	20.0
38	79.600	-1.000	12.789	30.0	0.0	-20.0
39	20.400	61.000	12.789	30.0	0.0	160.0
40	79.600	61.000	12.789	30.0	0.0	-160.0
41	48.800	-1.000	12.789	20.0	0.0	60.0
42	48.800	61.000	12.789	20.0	0.0	120.0
43	49.600	-1.000	12.789	25.0	0.0	20.0
44	49.600	61.000	12.789	25.0	0.0	160.0
45	50.400	-1.000	12.789	25.0	0.0	-20.0
46	50.400	61.000	12.789	25.0	0.0	-160.0
47	51.200	-1.000	12.789	20.0	0.0	-60.0
48	51.200	61.000	12.789	20.0	0.0	-120.0

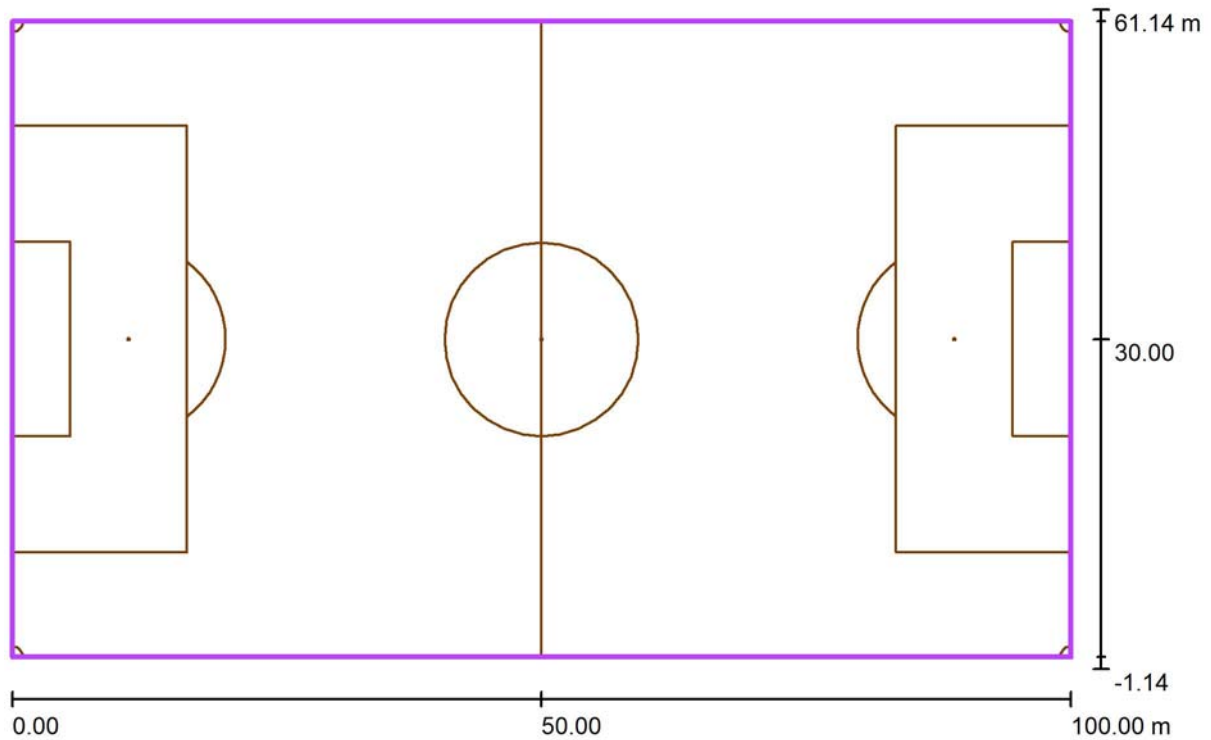
Γήπεδο ποδοσφαίρου / Sport Sites (Coordinates List)

Soccer Field



No.	Position [m]			Size Playing Area [m]		Size Total Area [m]		Rotation [°]		
	X	Y	Z	L	W	L	W	X	Y	Z
1	50.000	30.000	0.000	100.000	60.000	100.000	60.000	0.0	0.0	0.0

Γήπεδο ποδοσφαίρου / Γήπεδο ποδοσφαίρου / Summary



Scale 1 : 715

Position: (50.000 m, 30.000 m, 0.000 m)

Size: (100.000 m, 60.000 m)

Rotation: (0.0°, 0.0°, 0.0°)

Type: Normal, Grid: 19 x 11 Points

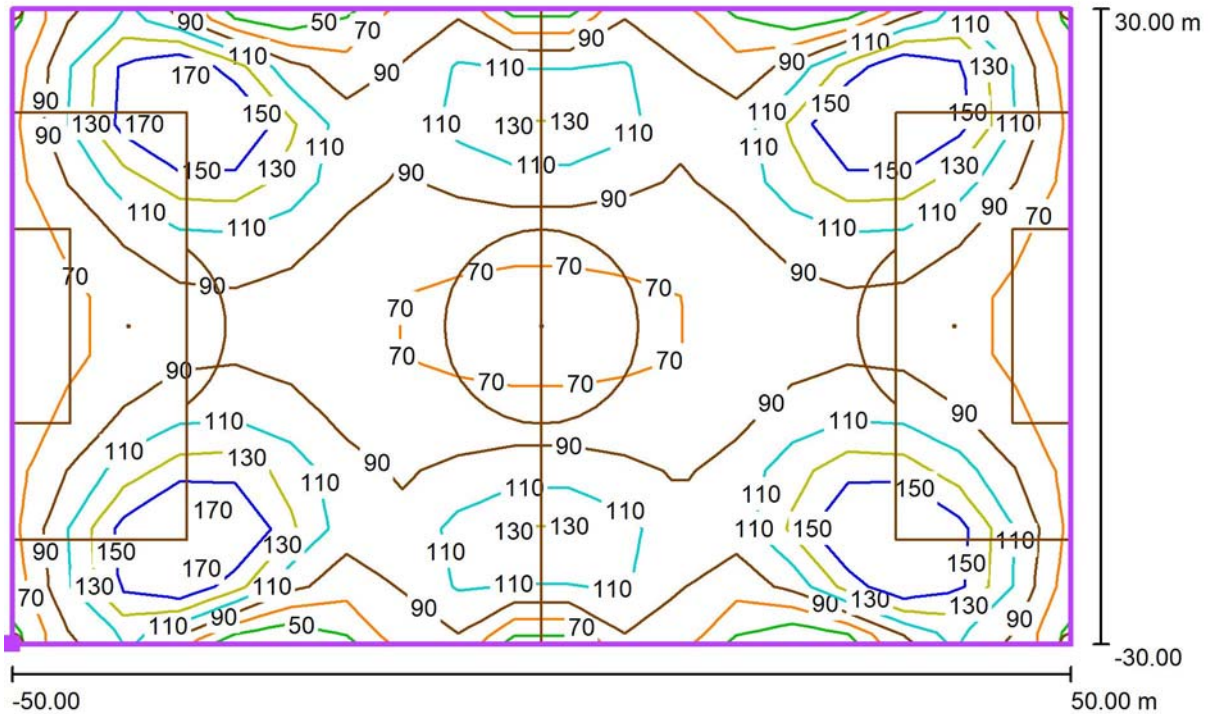
Belongs to the following sport arena: Γήπεδο ποδοσφαίρου

Results overview

No.	Type	E_{av} [lx]	E_{min} [lx]	E_{max} [lx]	u_0	E_{min} / E_{max}	$E_{h\ m} / E_m$	H [m]	Camera
1	horizontal	102	53	225	0.51	0.23	/	0.000	/

$E_{h\ m} / E_m$ = Relationship between middle horizontal and vertical illuminance, H = Measuring Height

Γήπεδο ποδοσφαίρου / Γήπεδο ποδοσφαίρου / Isolines (E, Horizontal)



Values in Lux, Scale 1 : 715

Position of surface in external scene:
Marked point: (0.000 m, 0.000 m,
0.000 m)



Grid: 19 x 11 Points

E_{av} [lx]
102

E_{min} [lx]
53

E_{max} [lx]
225

u_0
0.51

E_{min} / E_{max}
0.23

Ο ΣΥΝΤΑΞΑΣ

Γιώργος Πετρουλάκης
Ηλεκτρολόγος Μηχανικός