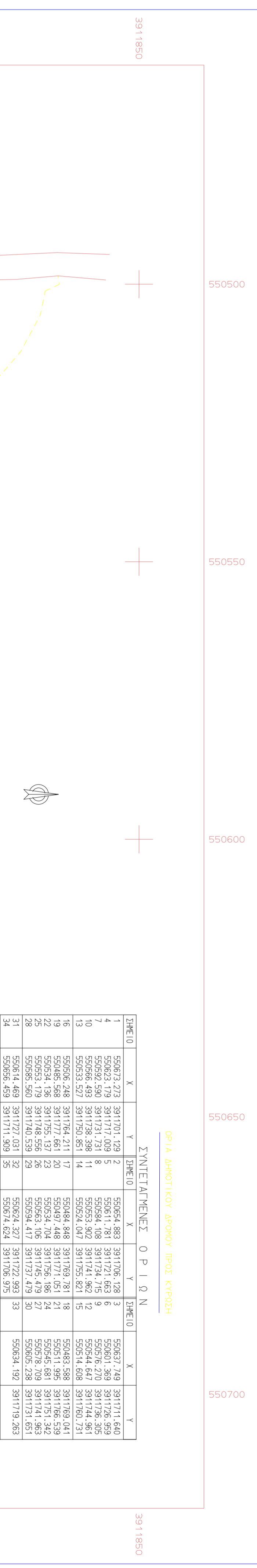
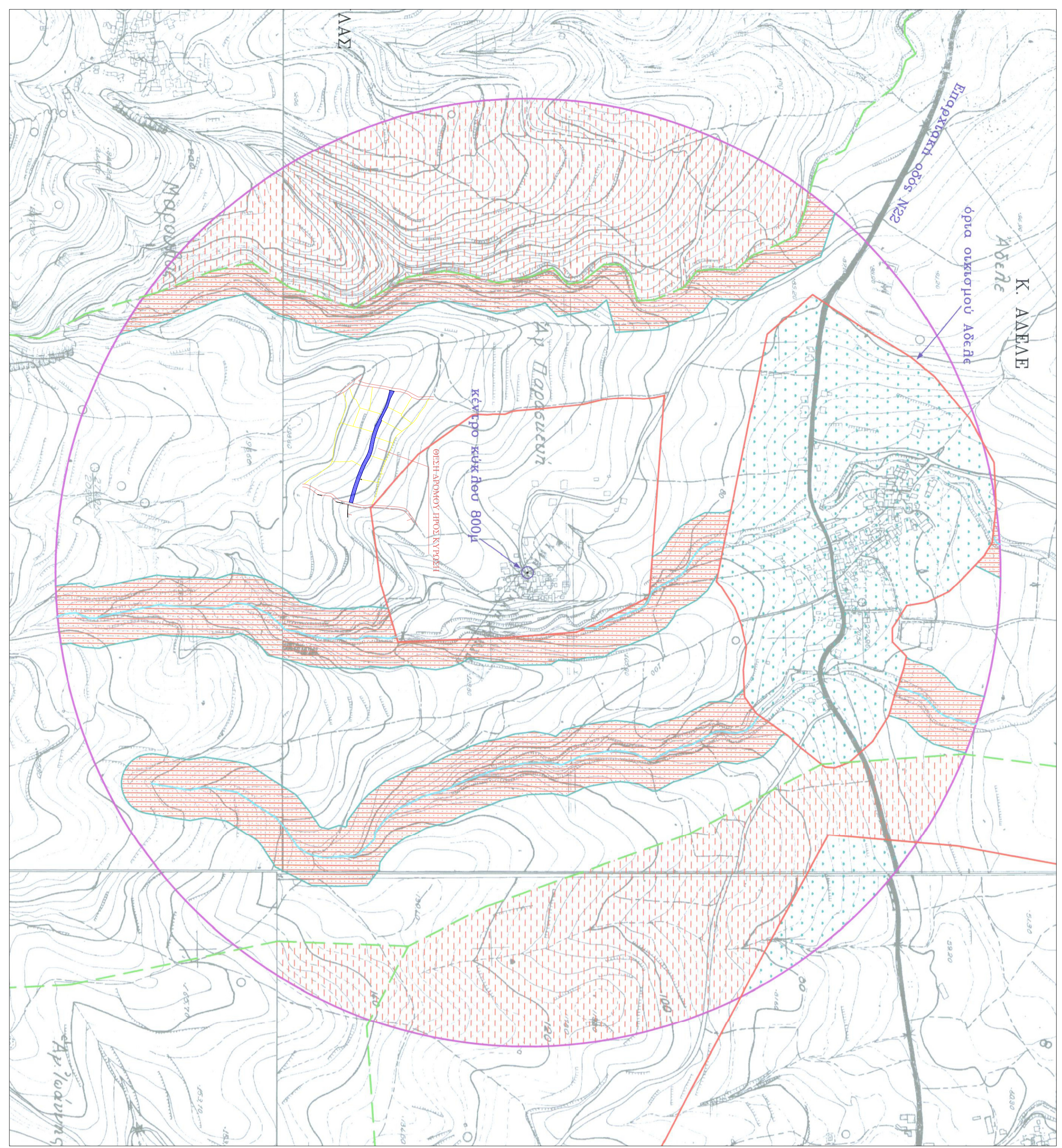


ΑΠΟΣΠΑΣΜΑ ΧΑΡΤΗΣ Γ.Σ. ΚΑΘΟΡΙΣΜΟΥ ΟΡΙΩΝ ΟΙΚΙΣΜΟΥ ΑΓΙΑΣ ΠΑΡΑΣΚΕΥΗΣ ΔΗΜΟΥ ΠΕΡΟΥΝΗΣ (ΦΕΚ 258ΑΠ/3-6-2009)



ΕΠΙΛΕΓΜΕΝΕΙ Ο.Ρ.Τ.Ω.Ν.Ε.Κ.Ο.

ΠΕΡΙΩΧ.	Α.Α.	ΚΑΔΕ	ΠΕΡΙΩΧ.	Α.Α.	ΚΑΔΕ	ΠΕΡΙΩΧ.	Α.Α.	ΚΑΔΕ
1	550562.273	3911601.129	550564.883	3911606.28	3	550567.749	3911611.649	
2	550562.379	3911611.602	550564.798	3911611.662	6	550568.395	3911616.599	
3	550562.485	3911622.368	550564.902	3911622.368	9	550568.444	3911624.961	
4	550562.591	3911633.134	550565.006	3911633.134	12	550568.493	3911633.323	
5	550562.697	3911643.900	550565.110	3911643.900	15	550568.542	3911641.685	
6	550562.803	3911654.666	550565.214	3911654.666	18	550568.591	3911650.047	
7	550562.909	3911665.432	550565.318	3911665.432	21	550568.640	3911658.409	
8	550563.015	3911676.198	550565.422	3911676.198	24	550568.689	3911666.771	
9	550563.121	3911686.964	550565.526	3911686.964	27	550568.738	3911675.133	
10	550563.227	3911697.730	550565.630	3911697.730	30	550568.787	3911683.495	
11	550563.333	3911708.496	550565.734	3911708.496	33	550568.836	3911691.857	
12	550563.439	3911719.262	550565.838	3911719.262	36	550568.885	3911700.219	
13	550563.545	3911730.028	550565.942	3911730.028	39	550568.934	3911708.581	
14	550563.651	3911740.794	550566.046	3911740.794	42	550568.983	3911716.943	
15	550563.757	3911751.560	550566.150	3911751.560	45	550569.032	3911725.305	
16	550563.863	3911762.326	550566.254	3911762.326	48	550569.081	3911733.667	
17	550563.969	3911773.092	550566.358	3911773.092	51	550569.130	3911742.029	
18	550564.075	3911783.858	550566.462	3911783.858	54	550569.179	3911750.391	
19	550564.181	3911794.624	550566.566	3911794.624	57	550569.228	3911758.753	
20	550564.287	3911805.390	550566.670	3911805.390	60	550569.277	3911767.115	
21	550564.393	3911816.156	550566.774	3911816.156	63	550569.326	3911775.477	
22	550564.499	3911826.922	550566.878	3911826.922	66	550569.375	3911783.839	
23	550564.605	3911837.688	550566.982	3911837.688	69	550569.424	3911792.201	
24	550564.711	3911848.454	550567.086	3911848.454	72	550569.473	3911800.563	
25	550564.817	3911859.220	550567.190	3911859.220	75	550569.522	3911808.925	
26	550564.923	3911869.986	550567.294	3911869.986	78	550569.571	3911817.287	
27	550565.029	3911880.752	550567.398	3911880.752	81	550569.620	3911825.649	
28	550565.135	3911891.518	550567.502	3911891.518	84	550569.669	3911834.011	
29	550565.241	3911902.284	550567.606	3911902.284	87	550569.718	3911842.373	
30	550565.347	3911913.050	550567.710	3911913.050	90	550569.767	3911850.735	
31	550565.453	3911923.816	550567.814	3911923.816	93	550569.816	3911859.097	
32	550565.559	3911934.582	550567.918	3911934.582	96	550569.865	3911867.459	
33	550565.665	3911945.348	550568.022	3911945.348	99	550569.914	3911875.821	
34	550565.771	3911956.114	550568.126	3911956.114	102	550569.963	3911884.183	
35	550565.877	3911966.880	550568.230	3911966.880	105	550570.012	3911892.545	
36	550565.983	3911977.646	550568.334	3911977.646	108	550570.061	3911900.907	
37	550566.089	3911988.412	550568.438	3911988.412	111	550570.110	3911909.269	
38	550566.195	3911999.178	550568.542	3911999.178	114	550570.159	3911917.631	
39	550566.301	3912010.944	550568.646	3912010.944	117	550570.208	3911925.993	
40	550566.407	3912021.710	550568.750	3912021.710	120	550570.257	3911934.355	
41	550566.513	3912032.476	550568.854	3912032.476	123	550570.306	3911942.717	
42	550566.619	3912043.242	550568.958	3912043.242	126	550570.355	3911951.079	
43	550566.725	3912054.008	550569.062	3912054.008	129	550570.404	3911959.441	
44	550566.831	3912064.774	550569.166	3912064.774	132	550570.453	3911967.803	
45	550566.937	3912075.540	550569.270	3912075.540	135	550570.502	3911976.165	
46	550567.043	3912086.306	550569.374	3912086.306	138	550570.551	3911984.527	
47	550567.149	3912097.072	550569.478	3912097.072	141	550570.600	3911992.889	
48	550567.255	3912107.838	550569.582	3912107.838	144	550570.649	3912001.251	
49	550567.361	3912118.604	550569.686	3912118.604	147	550570.698	3912009.613	
50	550567.467	3912129.370	550569.790	3912129.370	150	550570.747	3912017.975	
51	550567.573	3912140.136	550569.894	3912140.136	153	550570.796	3912026.337	
52	550567.679	3912150.902	550569.998	3912150.902	156	550570.845	3912034.699	
53	550567.785	3912161.668	550570.102	3912161.668	159	550570.894	3912043.061	
54	550567.891	3912172.434	550570.206	3912172.434	162	550570.943	3912051.423	
55	550567.997	3912183.200	550570.310	3912183.200	165	550570.992	3912059.785	
56	550568.103	3912193.966	550570.414	3912193.966	168	550571.041	3912068.147	
57	550568.209	3912204.732	550570.518	3912204.732	171	550571.090	3912076.509	
58	550568.315	3912215.498	550570.622	3912215.498	174	550571.139	3912084.871	
59	550568.421	3912226.264	550570.726	3912226.264	177	550571.188	3912093.233	
60	550568.527	3912237.030	550570.830	3912237.030	180	550571.237	3912101.595	
61	550568.633	3912247.796	550570.934	3912247.796	183	550571.286	3912110.957	
62	550568.739	3912258.562	550571.038	3912258.562	186	550571.335	3912119.319	
63	550568.845	3912269.328	550571.142	3912269.328	189	550571.384	3912127.681	
64	550568.951	3912280.094	550571.246	3912280.094	192	550571.433	3912136.043	
65	550569.057	3912290.860	550571.350	3912290.860	195	550571.482	3912144.405	
66	550569.163	3912301.626	550571.454	3912301.626	198	550571.531	3912152.767	
67	550569.269	3912312.392	550571.558	3912312.392	201	550571.580	3912161.129	
68	550569.375	3912323.158	550571.662	3912323.158	204	550571.629	3912169.491	
69	550569.481	3912333.924	550571.766	3912333.924	207	550571.678	3912177.853	
70	550569.587	3912344.690	550571.870	3912344.690	210	550571.727	3912186.215	
71	550569.693	3912355.456	550571.974	3912355.456	213	550571.776	3912194.577	
72	550569.799	3912366.222	550572.078	3912366.222	216	550571.825	3912202.939	
73	550569.905	3912376.988	550572.182	3912376.988	219	550571.874	3912211.301	
74	550569.961	3912387.754	550572.286	3912387.754	222	550571.923	3912219.663	
75	550570.067	3912398.520	550572.390	3912398.520	225	550571.972	3912228.025	
76	550570.173	3912409.286	550572.494	3912409.286	228	550572.021	3912236.387	
77	550570.279	3912420.052	550572.598	3912420.052	231	550572.070	3912244.749	
78	550570.385	3912430.818	550572.702	3912430.818	234	550572.119	3912253.111	
79	550570.491	3912441.584	550572.806	3912441.584	237	550572.168	3912261.473	
80	550570.597	3912452.350	550572.910	3912452.350	240	550572.217	3912269.835	
81	550570.703	3912463.116	550573.014	3912463.116	243	550572.266	3912278.197	
82	550570.809	3912473.882	550573.118	3912473.882	246	550572.315	3912286.559	
83	550570.915	3912484.648	550573.222	3912484.648	249	550572.364	3912294.921	
84	550571.021	3912495.414	550573.326	3912495.414	252	550572.413	3912303.283	
85	550571.127	3912506.180	550573.430	3912506.180	255	550572.462	3912311.645	
86	550571.233	3912516.946	550573.534	3912516.946	258	550572.511	3912320.007	
87	550571.339	3912527.712	550573.638	3912527.712	261	550572.560	3912328.369	
88	550571.445	3912538.478	550573.742	3912538.478	264	550572.609	3912336.731	
89	550571.551	3912549.244	550573.846	3912549.244	267	550572.658	3912345.093	
90	550571.657	3912560.010	550573.950	3912560.010	270	550572.707	3912353.455	
91	550571.763	3912570.776	550574.054	3912570.776	273	550572.756	3912361.817	
92	550571.869	3912581.542	550574.158	3912581.542	276	550572.805	3912370.179	
93	550571.975	3912592.308	550574.262	3912592.308	279	550572.854	3912378.541	
94	550572.081	3912603.074						